

We score quality  
Since 1952



## Company Profile

Parkash Gears is a gears manufacturing Company based in Ludhiana. We Manufacture Spur Gear, Helical Gear, Spiral Bevel Gears, Double Helical Gear, Bevel Gear, Sprocket Gear, Pinion Gear, Shaft Pinion, Bevel Pinion and Worm Gears at our Premises in Ludhiana (Punjab) and supply these products in all over India. Parkash Gears is involved in building world class gears since 1952. Parkash Gears manufacturer making the best possible facilities, offer and excellent variety at reasonable prices within the set time frame. Our Gears manufacturing facility is well equipped with all the latest & high tech machines, which help us providing an outstanding assortment. As a result of the aspects, we are able to take bulk consignments of our important customers.

We are among best industrial gears firms in India and we are the best gears manufacturer in Punjab. We are looking forward to get an enquiry from you please don't hesitate to approach us. Parkash Gear is one of the most willing to help. Due to a lot of experience in Gears Manufacturing we always deliver our customers with utmost quality gears on given time.

## Service

Parkash Gears, is among one of the leading company in India with specialization in industrial gear manufacturing. Following the motto " Quality before Quantity", at Parkash Gear we believe in providing genuine products to our clients. We don't make any kind sacrifices on product quality. We have various type of imported machineries to produce world class and reliable products quality. We have machines from international brands like **WMW Machinery Company, TOS, STANKO , GLEASON , DAEWOO PUMA, SYKES, DNW** and many more. Our main strength lies in the Satisfied Customer Return and aiming for International Standard quality and in time delivery guaranteed through continual follow-up from inquiry until delivery, for our Clients. Our Service include manufacturing of :

**Spur Gear**

**Helical Gear**

**Spiral Bevel Gears / Crown pinion gears**

**Double Helical Gear**

**Bevel Gear**

**Sprocket Gear**

**Pinion Gear**

**Shaft Pinion**

**Bevel Pinion**

**Worm Gear**



With an far reaching experience of over 50 years, Parkash Gears is an actively engaged in manufacturing , supplying and exporting gears to satisfy all kinds of industrial needs. Depending upon their usage in diverse applications

Gear are made of various materials, if you are looking for a high performance gear with reliable operation, the selection of suitable material is very important . Based on applications, gears for high load capacity require a tough & robust material like carbon steel etc. Whereas high precision .gears require material having lower strength and hardness rating .

## CAPABILITIES

How we make the best gears and sprockets in the world.

### **Product Development**

**Warehouse:-** Our plant include substantial warehouse space dedicated to storage of finished and semi finished goods available for immediate shipment or customization in our machine shop. Our inventory line includes thousands of line items, with hundreds of thousands of parts in stock in any time.

**Sample identification :-** We work with customers daily to identify sprockets and gears that are worn out, broken or of unknown specifications for some other reason. Our staff use their extensive knowledge of the geometry and manufacture of these parts, along with sophisticated measuring and calculation methods, to identify the specifications of items for re-manufacturing. This allows owners of such parts to obtain replacement parts where they might have had to replace entire gear boxes, mechanical systems or even machine tools.

**Development & Management:-** After order is placed with our company, it is reviewed and planned by a team of individuals . Work instructions and detailed CAD drawings are produced to aid manufacturing personnel in producing high quality products.



## Fabrication

**Overview:-** Our staff of skilled operators employ sophisticated welding processes in the fabrication of gear, sprocket pulley and sheave blanks. Fabrication is carried out for product configurations ranging in size from 2" to 120" diameter. Using both common and unique processes a wide variety of configurations can be produced for original designs or as economical replacements for castings.

**Welding:-** From simple weld jobs to advance fabricated parts, Parkash Gears can provide you with a welded product that will fill your needs.



## Machining

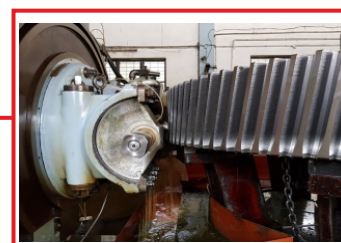
**Turning :-** Our turning equipments is modern and our capabilities comprehensive across our product line. All turning requirements are handled in-house for maximum control of quality and delivery. Our CNC machine tools utilize state of art programming systems providing versatility , efficiency and accuracy .

**Miling & Driling :-** Substantial miling equipment is available here for meeting special machine needs of our customers. We have our shop set up for both quick turn around, short run jobs, as well as medium quantity production orders. Extensive drilling & tapping machinery is available as well for production runs of bolt hole circles for ready sprockets and common taper bushed shaft attachment systems.



**Grinding :-** In additions to our gear tooth grinding abilities we also have substantial experience and ability with grinding other surfaces such as precision ID/OD grinding on our Studer Grinder as well as surface grinding and honing . The Studer provides unparalleled accuracy on diameter, straightness, roundness, concentricity and surface finish.

**Gear Cutting :-** Our gear cutting capabilities are very diverse, including all of the most common gear types used in industry. Our inventory of gear cutting tools is extensive, covering a broad range of common and uncommon. Diametral (both Normal and Transverse), Circular, AGMA & Fellow Stub and Metric Pitches.



**Sprocket Cutting :-** Today the company is among the most experienced and capable sprocket manufacturers in the world. Virtually every employee at Parkash Gear is involved with sprocket manufacturing, representing a vast level of experience in producing the best sprockets available. anywhere.

**Heat Cutting :-**We have extensive induction heat treating equipment and experience and can provide excellent value by hardening the teeth of steel sprockets or gears. Other hardening services, such as carburizing can be provided through cooperation with outside sources.

**Reboring & Broaching :-**Final preparations of products for shaft mounting are made here. CNC and mechanical lathes provide straight and tapered OD and ID turning. Keyway and spline broaching, keymay miling and set screw drilling capabilities are extensive as well . Please inquire for specific requirements.





### Infrastructure:-

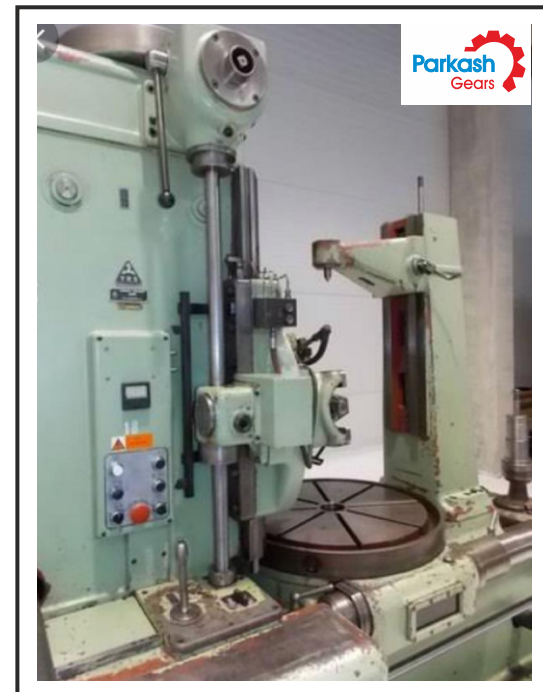
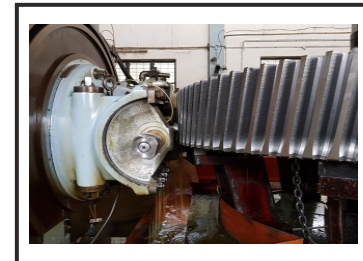
We are having wide range of Gear Cutting Machines , CNC Turnings , Grinders , Broaching , Milling and Drilling.

### Gear Cutting :-

- 1) Hobb Cutting , we are having all imported hobbing like TOS , Stanko , Pfauter , WMW, Sykes machines.
- 2) Sprial Bevel Gear cutting , we are having all Gleasons and WMW bevel generator.

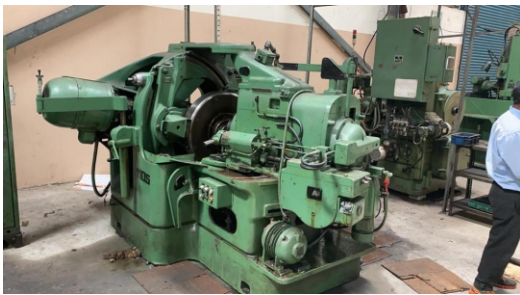
### Hobb Cutting:-

- 1) TOS Gear Hobbing (TOS fo10 , TOS fo16 , TOS fo25)
- 2) Stanko
- 3) Pfauter ( P630 , P900)
- 4) WMW Gear Hobbing
- 5) Sykes (Double Helical 3C)



### Gleason Machines and WMW Spiral Bevel Generator

- a) Gleason No. 22 ( Rougher and finisher)
- b) Gleason No. 16 ( 2 Rougher and finisher )
- c) Gleason Lapper No. 119
- d) Gleason Tester
- e) Gleason Tool Sharpner No. 13 A
- f) Gleason Tool blade setter
- g) WMW 500 ZFTKK ( Bevel generator)



a)



b)



c)



d)



e)



f)



g)



**Gears Inspection :-** After teeth cutting of Spiral Bevel Gears Inspection is being done.

- a) Roll on Tester
- b) Run out
- c) P.C.D check



In-Process Testing of Bevel Gears

a)



c)



d)

**Turning** :- Our turning equipments is modern and our capabilities comprehensive across our product line. All turning requirements are handled in-house for maximum control of quality and delivery. Our CNC machine tools utilize state of art programming systems providing versatility , efficiency and accuracy .

**Turning Machines** :- We are having wide range of imported CNC Turning machines

- a) DAEWOO 12L
- b) PUMA 230
- c) PUMA LYNX 200
- d) JYOTI



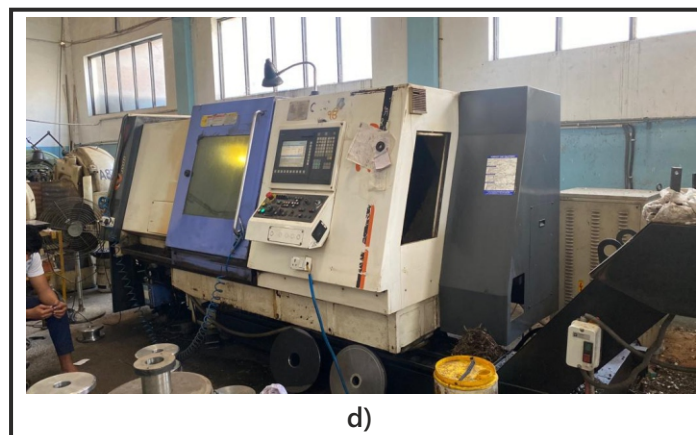
a)



b)



c)



d)



## HEAT TREATMENT PROCESSES:-

**PRE HARDENING:-** Several heat treatments can be performed before or during the gear manufacturing process to prepare the part for manufacturing. In many cases these steps are essential.

**1. Annealing:-** Annealing is primarily intended to soften the part and to improve its machinability. There are several annealing processes, all of which involve heating to and holding at suitable temperature followed by cooling at a specific rate usually through a critical range of temperatures.

### 2. Processes used for gears include :-

Full or super critical annealing where a gear blank is heated 90-180 degree C (160-325 degree F) above the upper critical temperature ( $A_{c3}$ ) of the steel and then slowly cooled in the furnace to around 315 degree C (600 degree F).

Interstitial annealing where the gear is heated to a temperature between the upper and lower critical temperature ( $A_{c1}$ ) and then rapidly cooled and sub critically annealing, where gears are heated 50-100 degree F below the lower critical temperature followed by a slow cool in furnace.

**3. Methods of Gears heat Treatment:-** Basically the heat treatment of gears are given below :

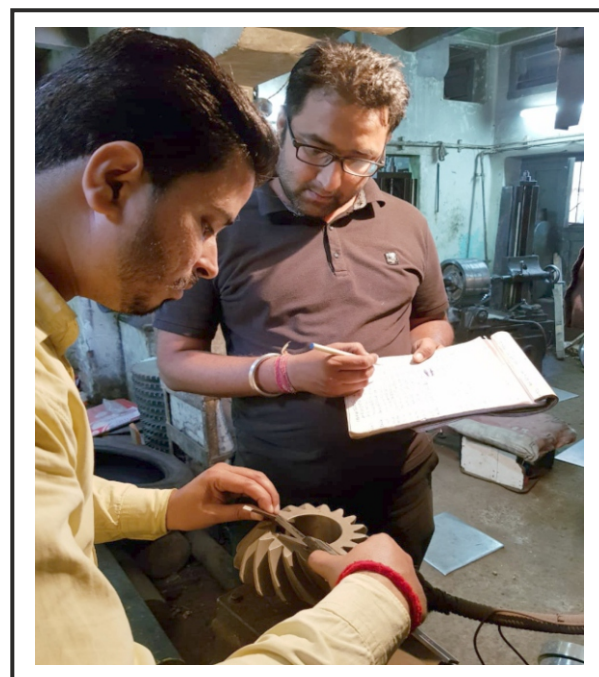
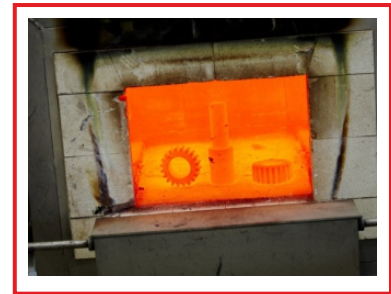
- Carburizing of Gears
- Induction Hardening of Gears
- Through- Hardening Gears
- Quenching of Gears
- Flame Hardening of Gears
- Sealed Quenching

### Deburring & Finishing

Removal of machining burrs and edges, marking of part numbers (both standard and customer specified) sandblasting, cleaning and coating of parts for rust inhibition and various other mid-process and final finishing operations are carried out in this development.

### Inspection

Our products are inspected continuously throughout the manufacturing process by our machine operators. Experienced inspectors make a final inspection before products are shipped or put into inventory. Our final inspectors have experience and a thorough knowledge of our products and manufacturing processes.



## OUR PRODUCTS

**Spur Gears:-** We make spur gears for heavy duty machine, therefore Spur Gears manufactured at our facility are extensively used in industrial and commercial purposes. Spur gears are supplied to the clients with changes as per suggested by the client on the best price available in the market.

Module : 35 Module

Capacity : 3050 mm,

Under installation >>

Material: MS Iron, Steel Casting, Forged gear

Features: Used in industrial and commercial purposes

Module: 20 Module

Capacity : 3600 mm



**Helical Gears:-** The Helical Gears produced by our production models are able to meet up with all the factors recommended by different gear manufacturing associations (GMA) at local level as well as worldwide level. We use the best world class raw materials for these Helical gears manufacturing. The Team which is responsible for introspecting the excellent standard of the produced Helical gears, is consists of professionals having share of knowledge in this specific areas. We use the best technology of the equipment industry and innovative machineries which certainly improve the excellent of the helical equipment.

Capacity : 3600 mm

Module : 20 Module

Features : Used in industrial and commercial purposes

Under installation >>

Capacity : 3050 mm

Module : 35 Module



**Spiral Bevel Gears/Crown Gears :-** Spiral Bevel Gear is a bevel class gear with helical teeth . The main program of spiral Bevel Gears is in an automobile differential, where the control of drive from the spinning shaft should be curved at 90/B0 to run the wheels. Spiral Bevel Gears generates less shake and disturbance than traditional straight-cut or spur-cut gears with immediately tooth.

Capacity : 600 mm

Module : 12 modules

Features : Produces less vibration , vehicle differential

Material : Steel casting, Forged gear, Alloy Steel ,  
upon customer requirement.





**Double Helical Gears:-** We "Parkash gears" are one of the respected fabricators of Double Helical Gears that are created using excellent content and work easily, without making any absurd sounds even under high pressure mode. Our variety is accurately developed and is examined to adjust with worldwide excellent requirements. These Double Helical Gears have involutes tooth that are used to hook with coextending shafts at a position to the axis of rotation.

Capacity : 2500 mm

Module : 20 Module

Features : 1. Better in strength

2. High torque

3. Smooth motion at very high rotational velocities

4. No side ways force and less wear and tear

international Standard : ASTM, BS, IS, AISI & SAE

Material Used : MS, Alloy steel Carbon steel. We also manufacturer custom gears according to specific material requirement.

Under installation >>

Capacity : 2800 mm

Module : 30 Module



**Bevel Gears:-** We have a vast variety of Bevel Gears with teeth that are cut into conical area. The teeth on Bevel Gears can be immediately, manage or bevel. The Bevel gears are made of stain less steel appropriately warm handled. Our technical engineers with their skills in production Bevel Gears have come with this variety which provide effective performing of the devices where they are used. We are a major Bevel Gears producer and provider, situated in India. We bring broad variety of industrial gears everything from Bevel Gears, Pinion Bevel Gears etc.

Capacity : 500 mm

Module : 12 modules

Features : Used in industrial and commercial purposes

Material : MS Iron , Steel Casting , Forged Gear



**Pinion Gears:-** Pinion Gears manufactured at Parkash Gears are widely recognized as best Pinion Gears. Pinion Gears are used to change torque into linear force. A type of spur gear, Pinion meshes with toothed bar or rod having larger radius of curvature. The racks and Pinion Gears are available in diametrical and metric module pitches and easily switch between rotary and linear motion. We manufacture pinion which is usually the smallest gear in a gear drive train. Made using premium quality raw materials, our pinions are highly durable but also cost effective. These Pinions Gears are made under supervision of technical experts so that their designs, cuts and precision are highly accurate.

Module : 20 Module

Features : Used in Industrial and commercial purposes

Material : MS Iron , Steel casting, Forged



**Sprocket Gears:-** We offer a variety of technological innovation elements, such as Sprocket Gear. Sprocket Gears are officially high tech and also ideal for use in several programs. Sprocket Gears are created using superior quality raw materials and are developed with highest perfection and attention. These can be on a rim to interact with the hyperlinks of a cycle. They interact with stores in many different energy indication and machine techniques. They are mainly created of certain, sintered steel, and as well alloys. Sprockets Gears are also developed to decrease disturbance and function .

Capacity : 3 inches pitch

Manufacturing Capacity : 1500 mm

Features : Used in Industrial and commercial purposes.

Material : MS Iron, Steel casting, Forged Gear

a) Type A Sprockets

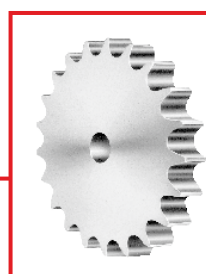
b) Type b sprockets

c) Finished Bore sprockets

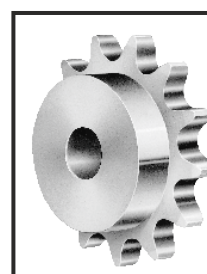
d) Ready Sprockets

e) Double Strand sprockets

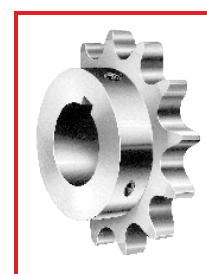
f) Triple Strand Sprockets



a)



b)



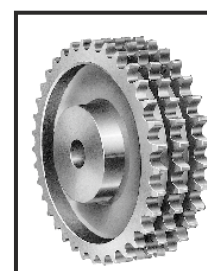
c)



d)



e)



f)

**Shaft Pinion :-** We are a shift pinion manufacturer company based in India. We are involved in the technological advancement of highly effective and affordable Shaft Pinion that is known for strength and excellent reliability . Our R & D division is involved in service and technology advancement to offer better and world class Shaft Pinion.

Capacity : 500 mm

Module : 20 Module

Features : Used in Industrial and commercial purposes.

Material : MS Iron, Steel Casting



**Bevel Pinion :-** We produce perfection designed extensive range world class Bevel Pinions. Bevel Pinion Gears are available in conventional as well as personalized dimensions as per the specification / dimension offered by the consumer. Available to us is an extensive wide range of bevel gear and bevel pinion gear that are produced by using the outstanding and reliable raw content to give our customer the product of highest quality

Features : Used in Industrial and commercial purposes

Material : MS Iron, Steel Casting, Forge Gear





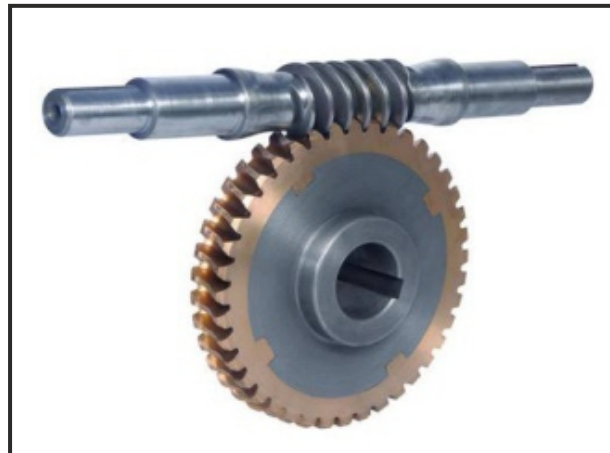
**Worm Gears:-** A worm Gear is used when a high velocity attrition rate is required between bridged axis shaft which do not cross at a point. Basic Worm gear can be used but the energy which can be passed on is low. A worm Gear Manufacturing includes a huge size worm rim with a worm attach meshing with teeth on the outside of the worm rim. The worm Gear is just like a twined and the worm rim is just like an area of a nut. As the worm is turned the worm wheel is triggered to move due to the twined like activity of the worm. The dimension of the worm gear set is usually based on the center range between the worm and the worm wheel.

Capacity : 2000 mm

Module : 16 modules

Features : Used in industrial and commercial purposes

Material : MS Iron, Steel Casting , Bronze



## Rotavator Gear



### Crown Gears/ Spiral Bevel Gears

#### **Crown Gears/ Spiral Bevel Gears Introduction**

Spiral Bevel Gear is a bevel class gear with helical teeth. The main program of Spiral Bevel Gears is in an automobile differential, where the control of drive from the spinning shaft should be curved at 90/B0 to run the wheels. Spiral Bevel Gears generates less shake and disturbance than traditional straight-cut or spur-cut gears with immediately tooth.

#### **Bevel Gear Lapping**

One of the essential starting factors for Spiral Bevel Gears manufacturing is lapping. Gear lapping is a strategy of sending a very stylish complete and high level of precision to Gears tooth. Lapping generally increases the use qualities of Spiral Bevel Gearstooth. To guarantee refined and silent operating. The Gears and pinions are lapped after solidfying. Lapping is obtained by operating dual couples together in a gear lapping device and stuffing a fluid reducing substance under stress into the Gears couple. The substances subtract restricted volumes of steel as the gears focus, hence improving the tooth area and accomplish desired contact style

#### **Spiral Bevel Gears Features**

Total efficiency  
Produces less vibration  
Noiseless

#### **Crown Gears Applications areas**

Cement plants  
Sugar Mills  
Mineral plants  
Mining industry  
Tractors / Three Wheelers / Trucks

**Capacity** : 600 mm  
**Module** : 12 modules  
**Features** : Produces less vibration vehicle differential  
**Material** : Steel Casting , Alloy steel , Forged Gear,  
17CrNiMo6, 20MnCr5





**We manufacture GEARS of the following companies**

- MAHINDRA      • SONALIKA      • ITL      & MANY MORE
- TAFE          • JOHN DEERE    • EICHER
- ESCORTS      • PTL            • MAZDA
- FORD
- JCB
- TATA



**Three-wheelers & Trucks**





**Shafts Long Axle - upto 1000 mm**



**Rear Axle Shaft Wheel Axle Shaft**





## **Industries Served**

In this era of industrial , we can see a large number of applications of gears in every industry. Gears play an important role in every machine. They are like an internal organ of a machine, without which they can't perform any kind of work. It is the most common device for transmitting power in mechanical engineering. The gears form an important part in bounding of various machines.

There are a vast variety of gears available in the market which is used in many different industries according to the specific requirements. They can be classified under various industries like Oil Mill Machinery Gears, Rubber Mill Gears, Machine Tools Gears, Power Press Gears, Hammer Gears, Sugar Mill Gears, Flour Mill Gears, Rolling Mill Gears, Iron and Steel Gears Mills, Cattle Feed Mill Gears

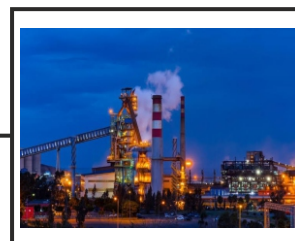
### **Oil Mill Industry**

Parkash gears is one the few manufacturers in Punjab that has treat and machining capability to service this oil mill industry. This industry requires high quality gears to extract and refining of the oil in machinery. We know that this industry is on a prosperous way and we want to be its part in the future. We have already planned to grow within oil mill machinery industry.



### **Steel Industry**

Parkash gears is one the leading gears company in Punjab. We manufacture high quality Double helical Gears for making steel and steel processing machinery required in the steel industry. We manufacture gears in our Punjab facility and we also have experience of over 50 years dealing in steel industry. A big part of our company is manufacturing and building gears to service the steel industry.



### **Cement Industry**

Today we can see that cement industry is dominating the development sector of India. Every builder is in need of cement to build houses and buildings. That's why a major part of Parkash Gear is focused on manufacturing gears related to cement industry. We build high quality spiral bevel gears/crown pinion gears, spur gears, helical gears, Sprocket gears, and pinion gears for any cement industry firm.



### **Mineral & Mining**

We build sprocket gears and pinion gears for some leading mining companies in India. These gears are applied in pulverizes, mining conveyors and various other mining machines. This industry have a huge demand for gears, so we have to manufacture a product that is made to relied upon and should be very endure to handle the rough conditions and intense shock loads which are required in this industry. Our gears like spiral bevel gears/ crown pinion gears, spur gears, helical gears are used in stone crushing machines.



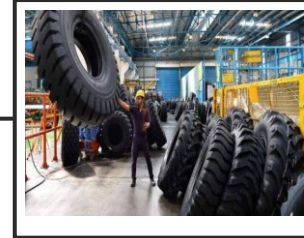
### **Agricultural Industry**

We provide combine gears and rotavators gears to fulfill this sectors needs and requirement. As we know that, Punjab largest industry is agriculture, it is the largest single provider of wheat to India. Therefore we have quiet a reputation in proving high class gears on which our farmer brothers can rely upon . We are one of the largest rotavators gears builder in Punjab.



### **Rubber Industry**

Parkash gears is one of the leading manufacturer and supplier to the rubber industry , by providing them best of the best sprocket Gears, pinion gears, spur gears, shaft pinions and many more. All gears are suitable for most rubber plants. Needless to say parkash gears has made some reputation for itself as a manufacturer of world class spur gears.



### **Machine Tools Industry**

The machine tool industry dates back to the Second world war. Due to the lack of imported machine tools there are few plants to full fill India people needs. But in today's world Parkash Gears provide sophisticated machines tools gears as well as gears of higher capacity either singly, or in large numbers. Parkash gears is among leading companies to produce Power press Gears in all over India.



### **Sugar Industry**

We have a line of spiral bevel gears/ crown pinion gears, spur gears, helical gears , and shaft pinions, which provides gearing to the sugar industry. Many machines which are used to refine the sugar need gears. Sugar industries in India have a lot of competition and requirement of gears for machines is also popular. At Parkash Gears we build durable and reliable Sprocket gears and Pinion gears.



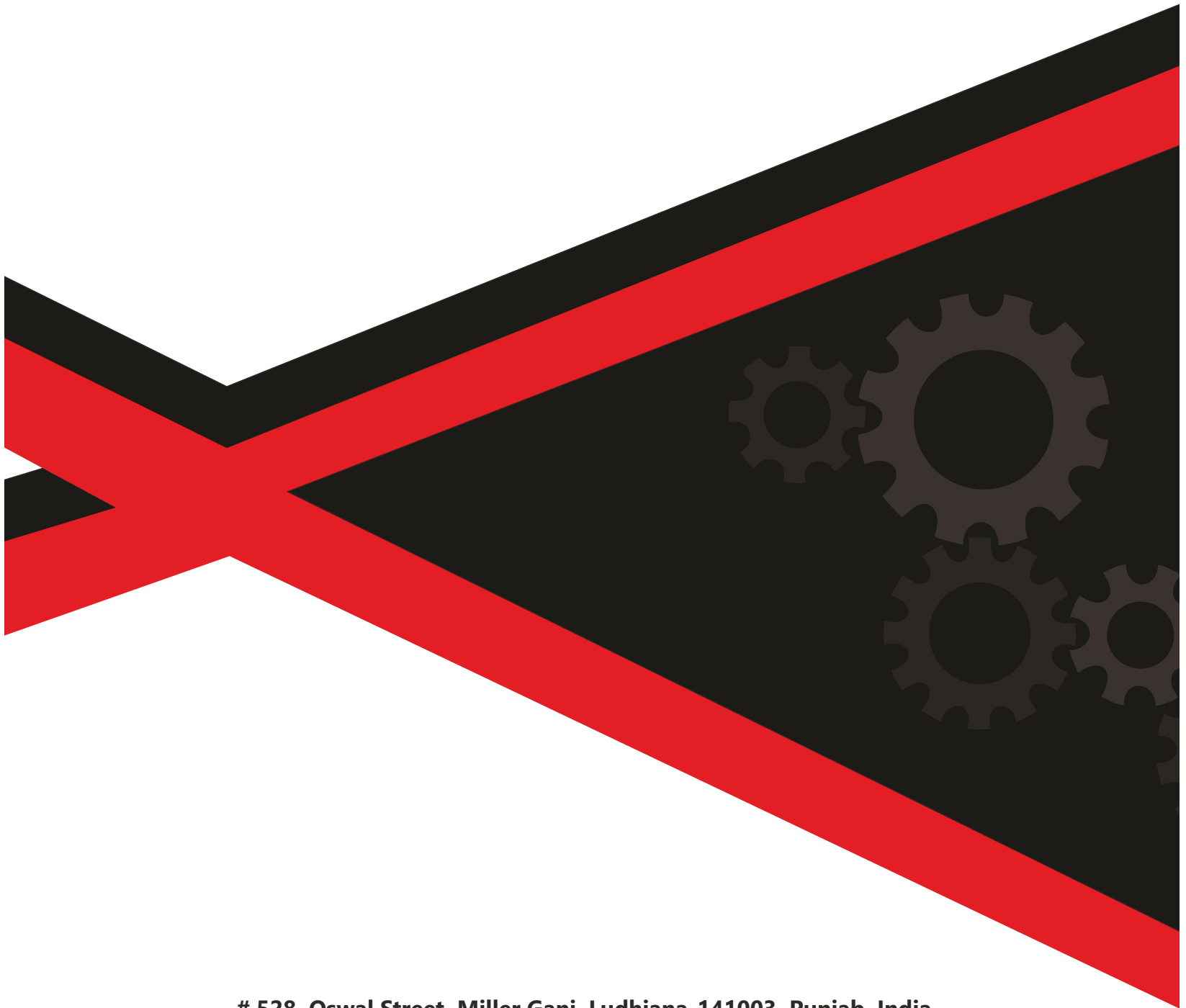
### **Automobile Industry**

We have a spiral gear/ crown gears, which provides gearing to the automobile differential, where the control of drive from the spinning shaft should be curved at 90/B0 to run the wheels.





*Important* **Notes**



# 528, Oswal Street, Miller Ganj, Ludhiana-141003, Punjab, India  
Tel. : +91-161-2531045, +91-98722-32910, +91-81464-00866, +91-98769-81099

E-mail : [sales@industrialgears.in](mailto:sales@industrialgears.in)

Website : [www.industrialgears.in](http://www.industrialgears.in)

Sister concern :-

**Parkash Industrial Corporation**

Oswal agro complex, Street No. 6 , Giaspura, Ludhiana